

BASEBALL FOUL POLE SPECIFICATIONS

ITEM # - BSFOUL - 20' FOUL POLE

The Foul Pole is constructed of two poles; lower section and upper section; along with three 4' sections referred to as wing panels.

1) LOWER POLE -

Constructed of 3.5" outside diameter x .098" wall x 144.0" L galvanized steel tubing.

The pole has a 8.0" swage on the upper end of it to fit with the UPPER POLE. After installation 48.0" of this pole will be below ground level.

2) UPPER POLE -

Constructed of 3.5" outside diameter x .098" wall x 152.0" L galvanized steel tubing.

The pole has a series of 12mm weld nuts for attaching WING PANELS.

3) WING PANELS -

Prefabricated Panels are constructed of
30mm x 30mm x 3mm steel angle iron
40mm x 20mm x 2.5mm diamond mesh flattened expanded metal

4) FINISH -

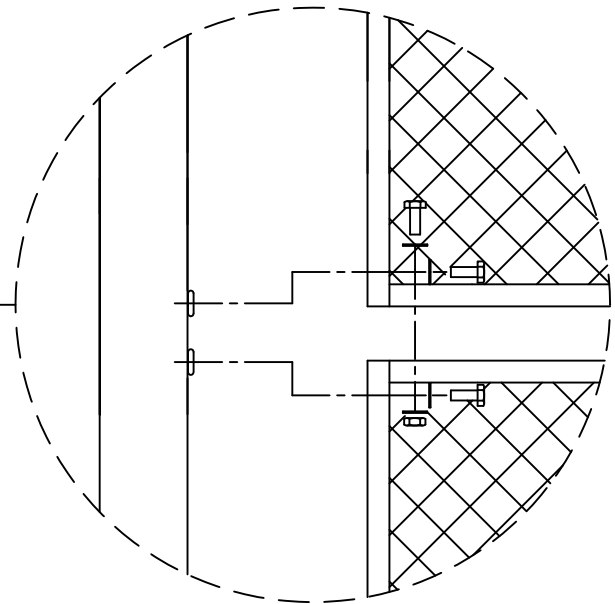
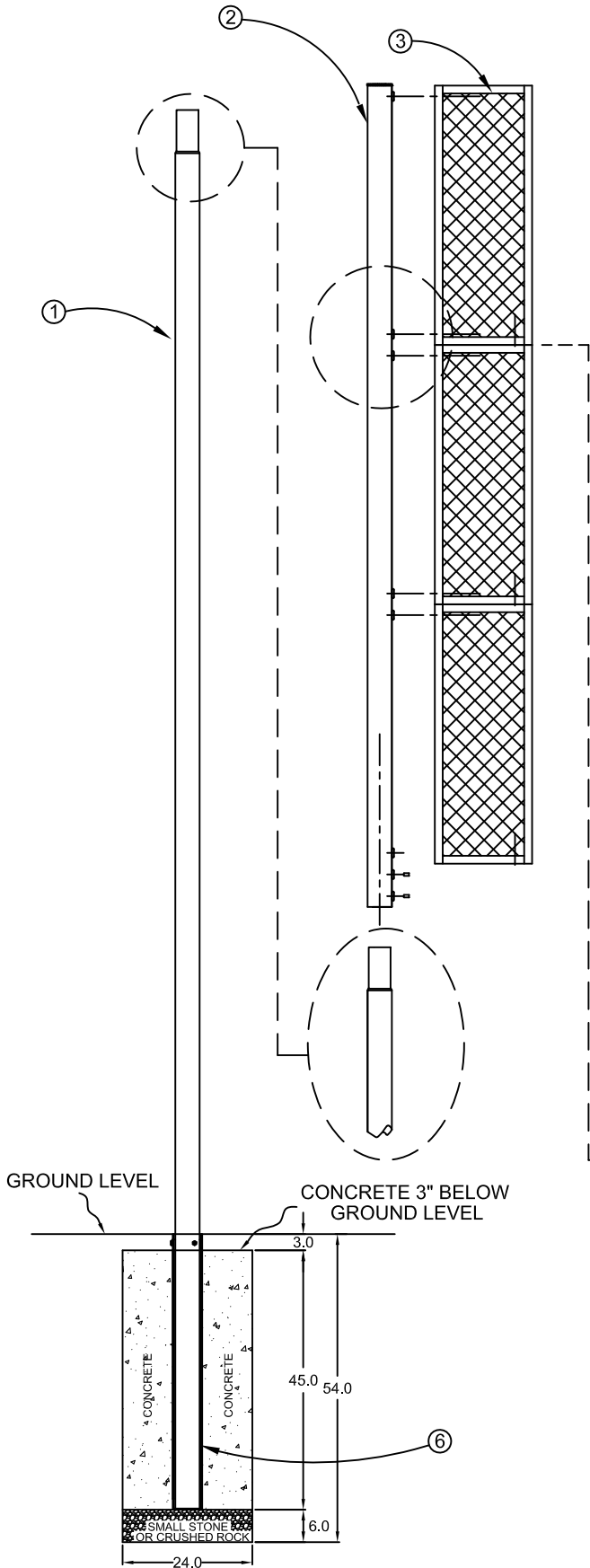
Powder Coated after fabrication with outdoor Yellow PMS-102C

5) HARDWARE -

Zinc Plated Grade2

6) GROUND SLEEVES (optional) -

Constructed of 4.0" outside diameter x .165" wall x 48.0" L steel tubing.
Galvanized after fabrication.



*FOLLOW SAME CONCRETE DETAIL IF
OPTIONAL GROUND SLEEVE IS NOT USED.

*MANUFACTURER RECOMMENDS
THE FOOTING BE REINFORCED
WITH 6 PIECES OF 46" REBAR.

TOLERANCE .X = ± .030 .XX = ± .010 .XXX = ± .005 FRACTIONAL = ± 1/32 UNLESS OTHERWISE NOTED		BSN SPORTS 1901 Diplomat Drive Farmers Branch, Texas 75234	
REV A	DATE 1/21	DRAWN Z. OSORIO	4/10
CHECKED		APPROVED	
REF:		SCALE: NTS	NUMBER BSFOUL
TITLE BASEBALL FOUL POLE - 20'			